

NATIONAL MOTOR VEHICLE EMISSION TEST CENTER - NETC





CONTENTS

I - General

II - Functions and Responsibilities

II – Organization

III - Testing

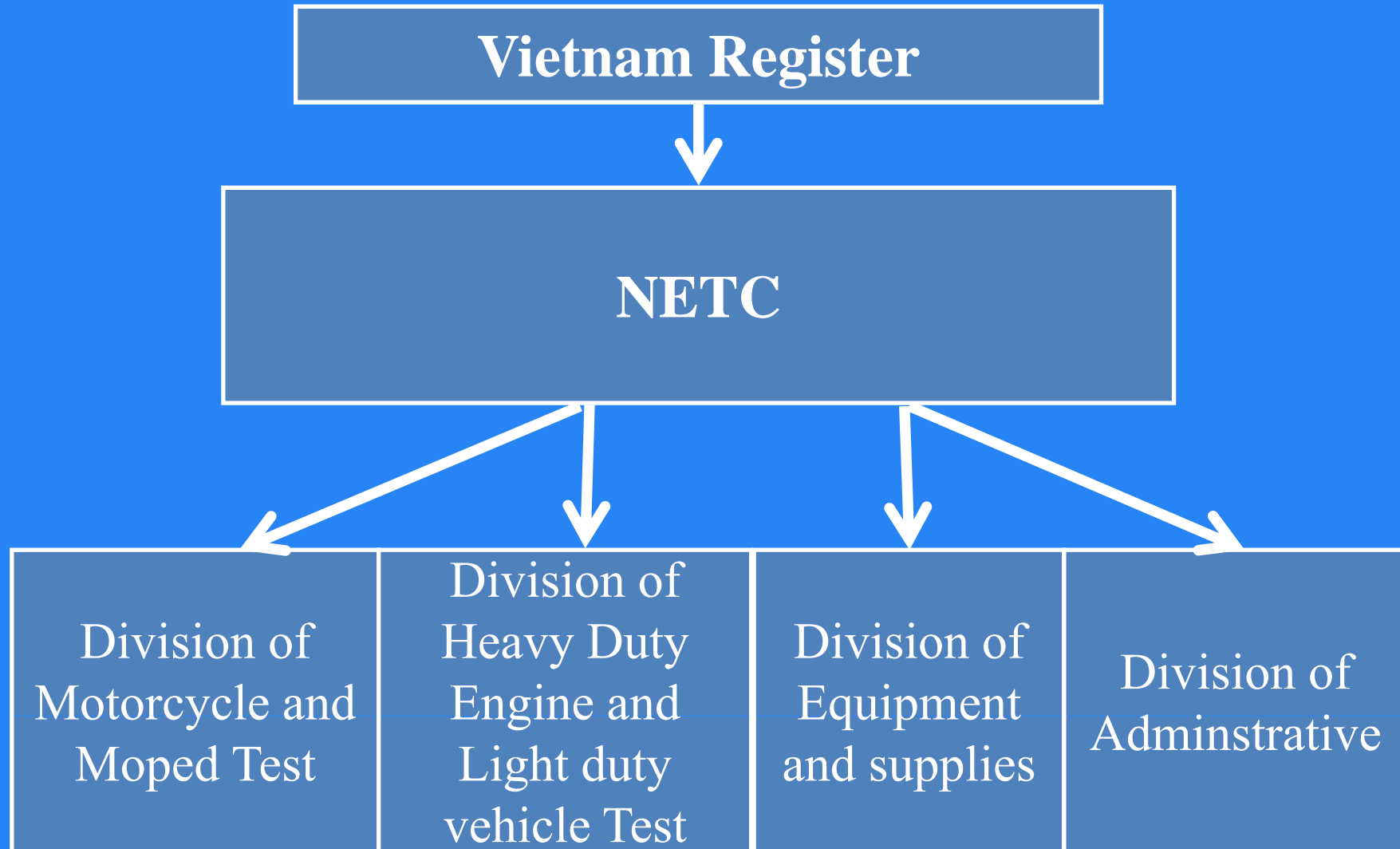
I. General

- NETC funded by Austrian government's official development assistance (ODA) under the Document 560/TTg-QHQT dated April, 10, 2006 of Vietnam's Prime Minister.
- Built under the Decision 635/QĐ-BGTVT dated March, 22, 2007 of the Minister of Transport.
- Main partner: AVL List GMBH from Austria
- Long-term purpose: Being Vietnam's main testing centre to control emission of motor vehicles according to European standard application regulated by the Vietnamese government.
- Immediate purpose: To implement the prime minister's Decision 249/2005/QĐ-TTg dated October, 10, 2005 about emission standards for new imported and assembled/ produced vehicles.

II. Functions and Responsibilities

- 1- Test emission of Motorcycles, Mopeds, Light duty vehicles and engines in Certification procedure for:
 - + Type approval of new motor vehicles produced and assembled in Vietnam.
 - + Quality of new imported motor vehicles.
 - + Exported motor vehicles and engines.
- 2- Test emission and fuel consumption for research and development for technical projects related to control and reduce the emissions of motor vehicle.
- 3- Perform the scientific researches and application researches to control the pollutions of motor vehicles. Develop the standards, regulations related to emission of motor vehicles and fuel consumption.
- 4- Training for emission test.
- 5- Perform the emission and fuel consumption tests from requirements of VR or other offices.

III- Organization



IV- Testing

- The complex equipment are produced in Europe and perform the emission tests of motor vehicles and heavy duty engines according to the EURO 3 standard (for Motor and Moped) and EURO 4.
- All testing equipments have been assessed and certified by TUV(Germany) organization.
- Additionally, the emission tests for heavy duty engines according to the different test cycles are possible.
- Another Tests will be applied in the future when upgrading the software and/or equipments.

Testing Facilities

- Emission tests for two/three/four wheels Motor cycles and Moped with unladen mass not exceeding 475 kg.
- Emission tests for Light Duty Vehicles.
- Emission tests for Heavy duty engines

EMISSION TEST FOR MOTOR VEHICLES AND HEAVY DUTY ENGINES

1- Motor cycles and Moped.

- Type 1 Test:
Test emission according to the European test cycles ECE 40, 47 EURO 2 & EURO 3.
- Type 2 Test:
Test emission at Idling speed
- Evaporative Emission Test



2 - Light Duty Vehicles

- Type 1 Test: EURO 2- EURO 4, European test cycles ECE 15-04, 15-05
- Type 2 Test: Test emission at Idling speed
- Type 3 Test: Emission of crankcase gases Test
- Type 4 Test: Evaporative Emission Test



3 - Heavy Duty Engine

- Test emission according to the European Test Cycle 13-mode (EURO2), European Stationary Cycle-ESC, European Transient Cycle-ETC, European Load Response-ELR (EURO 3 – EURO 4).



4- Emission Measurement of visible exhaust pollutants from C.I engines

- Measure the emission of visible exhaust pollutants by Opacimeter at steady speeds and free acceleration according to the ECE24 regulation.

Technical service Experience

The main testing experts were trained in Europe to:

- Control the automatic system of the emission and fuel consumption test.
- Perform the emission tests according to the European Standards.
- Additionally, the research and development technical applications to control and reduce air pollution from vehicles will be performed.

THANK YOU FOR ATTENTION